



## KEMENTERIAN PENDIDIKAN DAN KEBUDAYAAN

Jalan Jenderal Sudirman Senayan, Jakarta 10270  
Telepon 021 5711144 (Hunting)  
Laman : [www.kemdikbud.go.id](http://www.kemdikbud.go.id)

Nomor : 12513 /A.A1.3/KS/2017

22 Februari 2017

Lampiran : 1 (satu) berkas

Hal : Penyerahan Tawaran Beasiswa Penuh Tahun 2017 pada *Sun Yat-Sen University*  
Tiongkok

Yth.

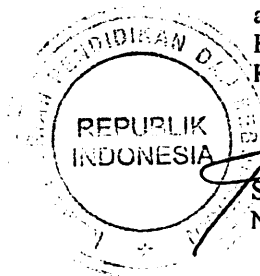
1. Direktur Pembinaan SMA
  2. Direktur Pembinaan SMK
- Kementerian Pendidikan dan Kebudayaan  
Jakarta

Menindaklanjuti surat Direktur Sekretariat SEAMEO nomor 59.106/146/17 perihal pada pokok surat (terlampir) dengan hormat disampaikan bahwa Universitas Sun Yat-Sen di provinsi Guangdong, Tiongkok menawarkan beasiswa penuh tahun 2017 untuk tingkat Sarjana bagi siswa dari negara Asia Tenggara sebanyak dua ratus (200) orang per negara sebanyak dua puluh (20) orang.

Sehubungan hal tersebut, kami mengharapkan Saudara dapat menyebarkan tawaran beasiswa dimaksud serta memberikan rekomendasi kepada para pendaftar sesuai dengan kriteria yang ada (formulir terlampir). Seandainya diperlukan, Saudara dapat menambah persyaratan ke dalam kriteria tersebut. Perlu kami sampaikan bahwa calon peserta akan dinyatakan tidak lulus apabila mendaftarkan diri pula pada program beasiswa lainnya seperti *Jasmine Jiangsu Tertiary Education Scholarship for Southeast Asia*, *Guizhou Government Scholarship for Southeast Asia*, dan *Hainan Government Scholarship for Southeast Asia*.

Selanjutnya apabila dokumen persyaratan beserta dengan surat rekomendasi sudah lengkap dapat dikirim ke [sekretariat@seameo.org](mailto:sekretariat@seameo.org) paling lambat tanggal 10 Maret 2017. Informasi lebih lanjut mohon menghubungi Sekretariat SEAMEO atau Ms. Deng, staf Kedutaan Besar Republik Rakyat Tiongkok di Jakarta melalui [1501376357@qq.com](mailto:1501376357@qq.com)

Atas perhatian dan kerjasama Saudara, kami ucapkan terima kasih.



a.n. Sekretaris Jenderal,  
Kepala Biro Perencanaan dan  
Kerjasama Luar Negeri

Suharti  
NIP.196911211992032002

Tembusan Yth:

1. Sekretaris Jenderal;
2. Direktur Jenderal Dikdasmen.

## **Sun Yat-Sen University “Undergraduate Scholarship Programme for International Students from Southeast Asian Countries” 2017 Prospectus**

SunYat-sen University (SYSU) is an important base for conducting scientific research, inheriting cultural and academic traditions and training high-level talents in South China. Being one of the leading universities in China and the world, SYSU is a comprehensive multidisciplinary university. The University enjoys a deep tradition of international cooperation and exchange in education with universities abroad. To improve its educational influence in the region in an overall way and to attract more students from all over the world, SYSU has setup the “Undergraduate Scholarship for International Students”, in support of outstanding students’ pursuit of bachelor's degrees at SYSU.

### **1. Entrance Requirements:**

(1) Applicants shall be non-Chinese with Southeast Asian citizens, hold a valid foreign passport, and meet relevant requirements for international students in China;

(2) Be healthy, friendly towards China, law-abiding, studious and well-conducted, without any records of violation of Chinese laws, regulations or school rules.

(3) Applicants shall be graduates from high school, with their high school grades ranking among the top; otherwise, applicants shall display excellence in social services, sports, music, other cultural activities or leadership. Specific standards can be recommended or developed by recommendation institutions in accordance with the education of the country, and shall be put on record at SYSU.

### **(4) Language Proficiency:**

Liberal Arts, Economics and Managerial Science Majors: HSK 5 Certificate (with 180 points or above); Science, Engineering and Medical Science Majors: HSK 4 Certificate (with 180 points or above).

The scholarship recipients without adequate Chinese language proficiency must take Chinese preparatory course for one academic year. Upon the completion of the preparatory course and the satisfaction of the language entry requirements, he or she will enter the undergraduate programme.

(5) Applicants are required to obtain a recommendation letter issued by recommending institutions.

**2. Enrolment Plan: 200 students from Southeast Asia in total**

In principle, SYSU plans to enrol 20 outstanding students from each country in Southeast Asia, but the specific quota allocation will be adjusted according to the actual application situation.

**3. Application Deadline: April 30<sup>th</sup>**

**4. Application Procedure:**

(1) Applicants shall submit the application materials to recommendation institutes, with the specific documents and requirements as follow:

No.	Documents	Requirements
1	The notarized Diploma and transcripts for senior high school	If the applicant has not yet graduated at the time of application, a pre-graduation certificate provided by his or her school must be submitted.
2	Xerox Copies of Language Proficiency Certificates	Applicants shall submit the relevant Language Proficiency Certificates according to "Entrance Requirements".
3	Xerox Copies of Award Certificates or Experience Certificates	If the certificate is not written in Chinese or English, a Chinese or English translation must be submitted.
4	Personal Statement	(1) Personal Statement must be written in Chinese or English and might include self-introduction, outstanding learning experience, interests and hobbies, knowledge of the school applied, learning purposes, career plans after graduation, and so on. (2) At the end of the Personal Statement, applicants must write down the sentence: "I hereby affirm that all the information and documents that I provided are true." And sign it as well. The application is invalid without the applicant's testimony and signature.

The qualified applicants will receive a recommendation letter issued by recommendation units.

(2) Applicants shall submit the application documents to SYSU; the specific application procedures are as follow:

#### **A. Online Application**

Applicants shall log on <http://application.sysu.edu.cn> with their own accounts, select "SYSU scholarship" program, fill in the form and upload the scanned copies of Passport's Personal Information Page, the notarized Diploma and Transcripts for Senior High School, Language Proficiency Certificate, Award Certificates or Experience Certificates, Personal Statement and Recommendation Letter.

#### **B. Please Note:**

a. After submitting the Application Form online, applicants do not need to post the paper application documents to SYSU.

b. The uploaded scanned images of documents must be clear and readable. If the documents do not meet the requirements, SYSU will not accept his or her application.

#### **5. Scholarship Coverage:**

(1) Liberal Arts, Economics and Managerial Science Majors:

**RMB56,000yuan/person/academic year** (including tuition fee RMB26,000yuan/person/academic year and living allowance RMB 30,000yuan/person/academic year)

(2) Science and Engineering Majors:

**RMB63,800yuan/person/academic year** (including tuition fee RMB33,800yuan/person/academic year and living allowance RMB 30,000yuan/person/academic year)

(3) Medical Science Majors:

**RMB78,000yuan/person/academic year** (including tuition fee RMB48,000yuan/person/academic year and living allowance RMB 30,000yuan/person/academic year)

The living allowance will be granted to the recipient via his or her bank account in one lump sum after registration. Tuition fee will be waived, but the scholarship recipients are required to pay fees in accordance with the standard of the self-supported students (including accommodation, insurance and other expenses). The recipients shall be also responsible for the visa application and the round-trip air ticket.

#### **6. Scholarship Granting Period:**

(1) The scholarship principally covers the normal study period of the undergraduate programme.

(2) The scholarship recipients without adequate Chinese language proficiency must take Chinese preparatory course for one academic year.

The scholarship will cover both major study and one academic year of Chinese Language study.

(3) A scholarship review will be carried out by the university annually to assess the recipients' academic and overall performance. Recipients who pass the review will continue to receive the scholarship funding.

#### **7. Selection Procedure:**

(1) During the application time, SYSU will guide the applicants to submit the application documents to the recommendation institutions. The recommendation institutions will screen excellent applicants and provide Recommendation Letter.

(2) By the application deadline, the recommendation institutions will send the Name List of the recommended applicants to [wuhao36@mail.sysu.edu.cn](mailto:wuhao36@mail.sysu.edu.cn) and [yangwq6@mail.sysu.edu.cn](mailto:yangwq6@mail.sysu.edu.cn).

(3) Two weeks after the application deadline, SYSU will organize a panel of experts to review the application materials and, if necessary, conduct long-distance or face-to-face interviews with the applicants in order that the overall qualities of the applicants can be assessed.

(4) The Acceptance List will be released before May 30.

#### **8. Enquires**

Contact: Ms. Wu Hao, Ms. Yang Weiqing

Email: [wuhao36@mail.sysu.edu.cn](mailto:wuhao36@mail.sysu.edu.cn), [yangwq6@mail.sysu.edu.cn](mailto:yangwq6@mail.sysu.edu.cn)

Fax: 0086-20-84115621

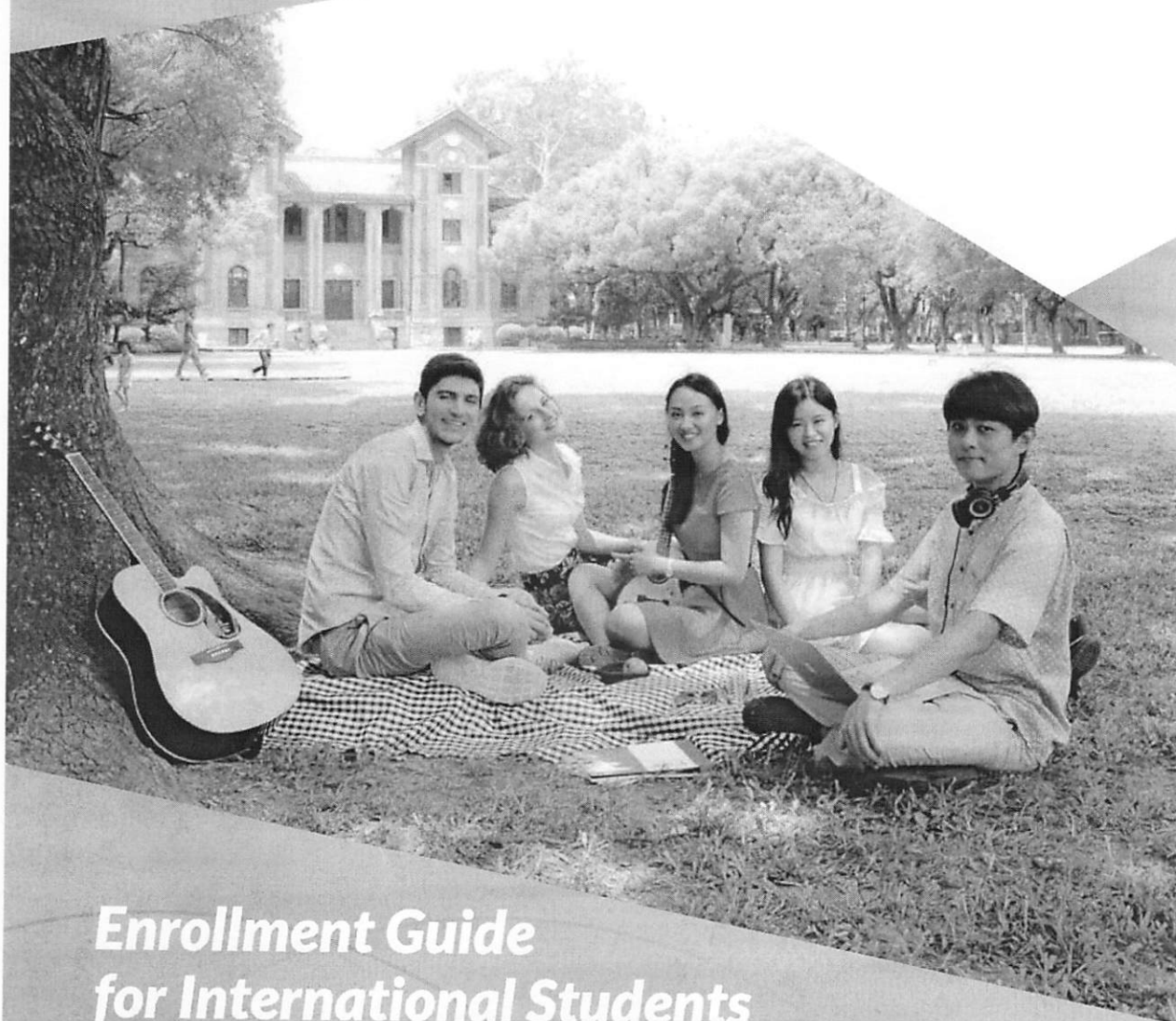
Tel: 0086-20-84112480 /84110848

Address: Office for International Students' Affairs, Sun Yat-sen University, No. 135,  
Xingang Xi Road, Guangzhou, P. R. China

Zip Code: 510275

# Sun Yat-sen University

— A unique combination of history, prestige and beauty



## Enrollment Guide for International Students

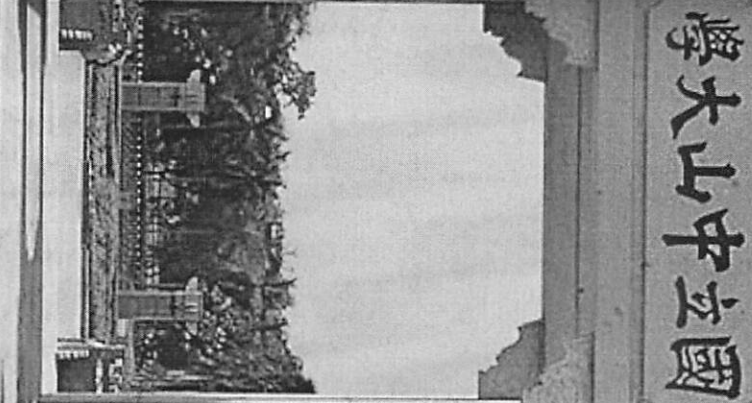
(Undergraduate Programs)

---

外国留学生招生指南  
本科生课程

况

# al Introduction



學大山中立國

中山大学由孙中山先生创办，有着一百多年办学传统，是一所中知名的综合性大学。现由广州校区、珠海校区、深圳校区三个校区及十家附属医院组成。

中山大学致力于将学生培养成为学术精英、行业领袖和社会英才，有 18 个学科领域进入 ESI（基本科学指标）全球前 1%，居国内第 1 名（截止 2016 年 5 月）。

现在，中山大学站在新的起点上，努力推动学校进入国内高校为把中山大学建设成为文理医工各具特色融合发展，具有广泛国际一流大学而奋斗！

Sun Yat-sen University was founded in 1924 by Dr. Sun Yat-sen, pioneer of the Chinese democratic revolution. It is one of the C-ranked multi-disciplinary institutions, marked by a unique con history, prestige and beauty.

As an engaging community, SYSU is dedicated to the excellenc and learning. SYSU faculty members devote themselves both and to academic research. In 2016, the University had eightee ranked in the top 1% in the world based on ESI, which ranked 1 China.

Benefiting from its location near Hong Kong and Macao and th advantage of opening and economic development, the univiers become an important base for training high-level talents, scie research, providing services to society and inheriting cultural t



世界排名 (2016)  
US NEWS

年

US NEWS

第 198 名

世界排名 (2016 US NEWS)

博学审问 慎思明辨 笃行

校训

Guangdong,  
China

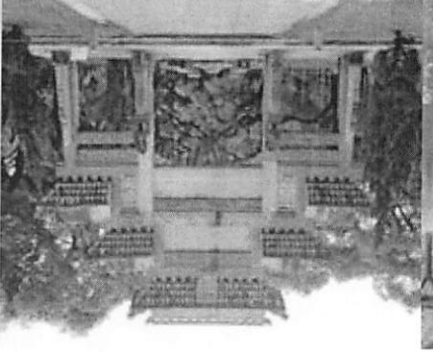
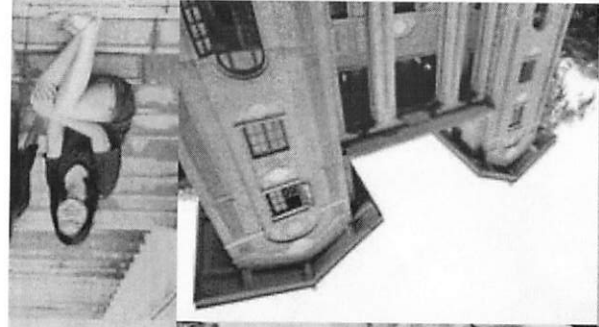
Location:

in China  
(2016 US NEWS)

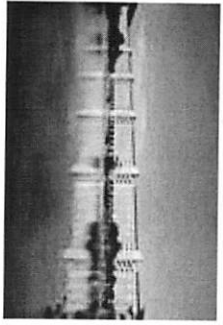
8th  
Ranking:

Established  
1924

Ranking:  
198th  
in the world  
(2016 US NEWS)







### 珠海校区

北校园  
珠海校园

### 深圳校区

深圳校园

### 全球合作伙伴

在超过 30 个国家和地区有 243 个合作伙伴

- 美国 44
- 非洲 1
- 欧洲 70
- 亚洲 104
- 大洋洲 15

### 附属医院:



### 国际合作:



### 学历生:



- 本科生
- 硕士研究生
- 博士研究生
- 外国留学生

科学、社会科学  
(医学等领域)

### 联合培养项目:



### 交换生项目:



### 校本部专任教师:



- 教授: 1
- 副教授:
- 外籍教师



ct (2016)



### Global Partnerships

234 partnerships in over 30 countries & areas

- America 44
- Europe 70
- Asia 104
- Africa 1
- Oceania 15

### Campuses

East Campus    North Campus

Shenzhen  
Shenzhen Campus

### Schools:



(Covering natural sciences, liberal arts, social sciences, technical sciences, managerial sciences, and medical sciences)

### Overseas Alumni Associations:



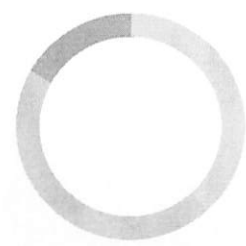
### Joint Programs:



### Exchange



### Faculty:



- Professors: 1,
- Associate Pro
- International

### Int'l:

### International Cooperations:

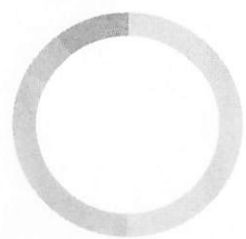


countries and regions

### Partnering Universities / Schools:



### Degree Students:



- Undergraduat
- Master Stude
- Doctoral Stud
- International



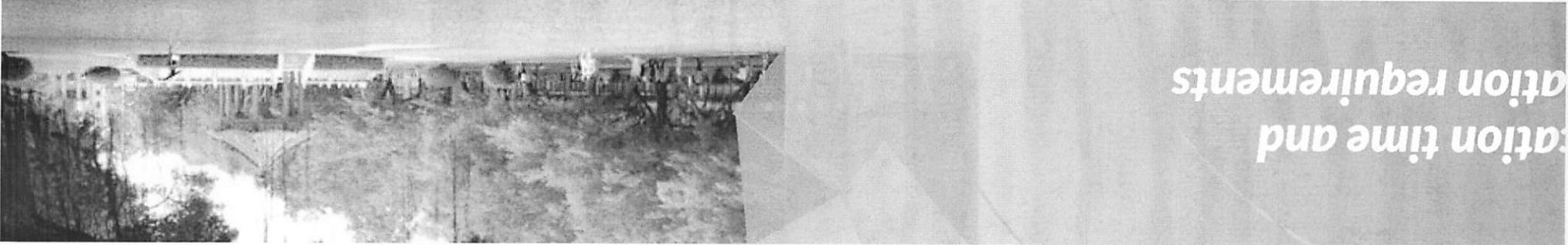
## 时间和申请要求

3月1日 - 5月5日

2、高中毕业； 3、年龄在18周岁至45周岁，身体健康。

材料	要求
网上入学申请表	登录 <a href="http://application.sysu.edu.cn">http://application.sysu.edu.cn</a> , 填表和提交。
材料①: 网上入学申请表	打印填好的《网上入学申请表》, 在最后一页签名。
材料②: 护照复印件	个人信息页。

材料③: 高中毕业证书、成绩单复印件	<p>1、申请文科类专业: 高中语文、数学、英语上(中国百分制70分以上), 其他各科成绩或中国百分制60分以上)。</p> <p>2、经济管理类专业: 高中语文、数学、英语(中国百分制70分以上), (申请岭南学院数学分数须达B级即80分以上), 其他各科成绩或中国百分制60分以上)。</p> <p>3、理工科类专业: 数学、物理、化学三门中C级以上(中国百分制70分以上), 其他各科成绩或中国百分制60分以上)。</p> <p>4、医科类专业: 高中数学、物理、化学、生以上(中国百分制70分以上), 其他各科成绩或中国百分制60分以上)。</p> <p>如果毕业证书和成绩单不是中文或英文文本的, 处翻译的中文或英文翻译件。</p>
材料④: 语言证书	<p>1、申请中文授课的: 文科/经管类: HSK5以上; 理工/医科: HSK4级证书(180分以上);</p> <p>2、申请英文授课的(指定专业): 高中英语70/100以上)或托福IBT(60分以上)或雅思申请人母语为英语者, 无须提供英语证书。</p> <p>3、申请汉语本科: 无汉语基础的申请人, 不须有汉语基础的申请人, 若提供HSK证书或其他可获得插班考试资格。</p>
材料⑤: 其他材料	根据学校当年的要求, 按时提交材料。
备注: 在申请截止日(5月5日)前, 申请人必须把申请材料(一式两份)邮寄到中生办公室。	



# Application time and application requirements

**Application Time: March 1st - May 5th**

## Notes:

1. Senior high school graduate, 3. 18-45 years of age and healthy.

## Application Procedures:

Documents	Requirements	<p>Register via <a href="http://application.sysu.edu.cn">http://application.sysu.edu.cn</a>, fill in the Online Application Form and have it submitted.</p> <p>Print the completed Online Application Form and sign on the last page.</p> <p>Personal information page</p>
Online Application Form	Online Application Form	<p>1. Applicants for Liberal Arts Majors: High school grade of each subject must be D or above in the Chinese 100-mark system), among which Chinese, Mathematics and English grades must be C or above in the Chinese 100-mark system).</p> <p>2. Applicants for Economics and Managerial Science Majors: High school grade of each subject must be D or above (60 or above in the Chinese 100-mark system), among which Chinese, Mathematics and English grades must be C or above (70 or above in the Chinese 100-mark system).</p> <p>3. Applicants for Science and Engineering Majors: High school grade of each subject must be D or above (60 or above in the Chinese 100-mark system), among which Chemistry grades must be C or above (70 or above in the Chinese 100-mark system).</p> <p>4. Applicants for Medical Majors: High school grade of each subject must be D or above in the Chinese 100-mark system), among which Mathematics, Physics, Chemistry and Biology grades must be C or above (70 or above in the Chinese 100-mark system).</p> <p>Documents in languages other than Chinese or English must be attached with the notarized translations in Chinese or English.</p>
2. Xerox copies of Passport		<p>3. Diploma and transcripts for senior high school</p>

<p>1. Applicants for Chinese-taught Programs: Liberal Arts, Economics and Managerial Science 5 Certificate (with 180 points or at HSK 5 points or above).</p> <p>2. Applicants for English-taught Programs (programs): High school grade of English must be C or above in the Chinese 100-mark system), or TOEFL IELTS with 6 or above. Any applicant whose English does not need to submit any English Certificate.</p> <p>3. Applicants for Undergraduate Programs: Applicants with zero basis of Chinese requirements for any language certificates. Applicants with Chinese Language Knowledge Certificate or other Chinese Learning Certificate will be eligible for the placement.</p> <p>Applicants shall submit the other required documents on time.</p>	<p>4. Language Proficiency Certificates</p>	<p>5. Other Documents</p>
<p>Note: Applicants shall deliver all application documents in duplicate to International Students' Affairs, Sun Yat-sen University by airmail before deadline May 5th.</p>		

(元/人/学年)

	文科和经济管理类	理科和工科类	医科、艺术和体育类
	26,000	33,800	48,000
	400	400	600 MBBS: 800

不得退还。

主综合保险 (包括意外伤害、住院医疗和身故保险) :

元/人/年。

宿舍名称	房间类型	价格
紫荆园留学生楼	空调双人房	5,250 元/人/学期 (不含寒暑假)
东区 103 栋宿舍	空调双人房	12,000 元/人/学年
东区 351 栋宿舍	空调双人房	20 元/人/天
第三学生宿舍	空调三人房	5,100 元/人/学年
留学生楼	空调双人房	6,000 元/人/学年
留学生宿舍	空调四人房	3,000 元/人/学年
荔园 6 号留学生楼	空调双人房	4,500 元/人/学年
留学生宿舍	空调四人间	3,000 元/人/学年

不包括每月的水电费、电话费、电视公用天线费及押金, 需另付。

请参照: <http://iso.sysu.edu.cn/sh/> - "生活"。

均以当年学校公布的收费标准为准。

暂不能申请校内宿舍。

## 1. Tuition for long-term programs (RMB/person/academic year)

Categories	Liberal Arts/ Economics and Managerial Science	Natural Science and Engineering	Medical Science/
Undergraduate Programs	26,000	33,800	48,000
Registration Fee	400	400	600 MBBS: 800

Note: Once the Registration Fee is due, no refund is allowed.

## 2. Overall Insurance and Benefit Plan (Including Loss of Life Insurance, Accidental Injury Treatment Insurance and Hospitalization Medical Insurance) :

RMB 800/person/year

## 3. Accommodation

Campuses	Dormitories	Room Types	Prices
South Campus	International Students' Dormitory (Zi Jing Yuan)	Air-conditioned Double Room	RMB5,250/person/semester (summer and winter v excluded)
	No.103 Dormitory	Air-conditioned Double Room	RMB12,000/person/academic year
	No.351 Dormitory	Air-conditioned Double Room	RMB20/person/day
North Campus	International Students' Dormitory	Air-conditioned Triple Room	RMB5,100/person/academic year
East Campus	International Students' Dormitory (No.3 Gezhi Yuan)	Air-conditioned Double Room	RMB6,000/person/academic year
	Students' Dormitory	Air-conditioned Quadruple Room	RMB3,000/person/academic year
Zhuhai Campus	International Students' Dormitory (No.6 Li Yuan)	Air-conditioned Double Room	RMB4,500/person/academic year
	Students' Dormitory	Air-conditioned Quadruple Room	RMB3,000/person/academic year

Note: 1. Monthly bills for running water, electricity, telephone, cable TV and its deposit are not included in the room price. For more information, please refer to the website: <http://iso.sysu.edu.cn/sh/> for "Guide for Living".

2. For specific fee structure, please refer to the payment standard released by SYSU in the same year.

3. Dormitories are not provided for non-degree Chinese Language students.



# 页和咨询方式 and Contacts for Schools and Departments

International Students Affairs  
du.cn/

招生通道

Online Application  
<http://application.sysu.edu.cn/>

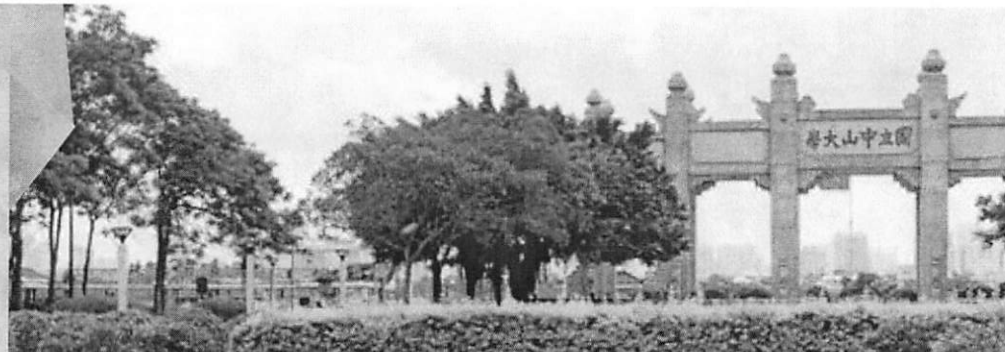
on procedure):  
0819 +86 (20) 84112480



Library of Programs	院系 Schools and Departments	网址 Websites
Chinese Language	外国语学院 (国际汉语系) School of Foreign Languages (Department of Chinese as a second language)	182.254.227.224
English	外国语学院 School of Foreign Languages	fls.sysu.edu.cn
German		
French		
Japanese		
Economics	岭南 (大学) 学院 Lingnan (University) College	www.lingnan.sysu.edu.cn
Management Science	管理学院 Sun Yat-sen Business School	bus.sysu.edu.cn
Business Administration	国际金融学院 International School of Business and Finance	isbf.sysu.edu.cn
Business Administration	旅游学院 School of Tourism Management	stm.sysu.edu.cn
Business Administration	传播与设计学院 School of Communication and Design	scd.sysu.edu.cn
Business Administration	法学院 School of Law	law.sysu.edu.cn
Psychology	心理学系 Department of Psychology	psy.sysu.edu.cn

16	公共管理 Public Administration	政治与公共事务管理学院 School of Government	sog.sysu
17	国际政治 International Politics	国际关系学院 School of International Relations	saps.sys
18	汉语言文学 Chinese Language and Literature	中国语言文学系 Department of Chinese	chinese. chinesez
19	历史学 History	历史学系 Department of History	history.s home3.s ryzh/
20	哲学 Philosophy	哲学系 Department of Philosophy	philosop phil-zh.s
21	逻辑学 Logic		
22	人类学 Anthropology	社会学与人类学学院 School of Sociology and Anthropology	ssa.sysu
23	社会学 Sociology		
24	图书情报与档案管理 Library and Archive Science		
25	信息管理与信息系统 Information Management and Information System	资讯管理学院 School of Information Management	im.sysu.
26	数学 Mathematics	数学学院 School of Mathematics	math.sys
27	物理学 Physics		
28	光电信息科学与工程 Photoelectron Information Science and Technology	物理学院 School of Physics	spe.sysu
29	物理学 Physics	物理与天文学院 School of Physics and Astronomy	sap.sysu

# 页和咨询方式 and Contacts for Schools and Departments



应用力学 Applied and Applied Mechanics		
动力工程 Energy and Dynamical Engineering	工学院 School of Engineering	egs.sysu.edu.cn
机械工程 Mechanical Engineering		
交通工程 Traffic Engineering		
化学 Chemistry	化学学院 School of Chemistry	ce.sysu.edu.cn
化学工程与工艺 Chemical Engineering and Technology	化学工程与技术学院 School of Chemical Engineering and Technology	cet.sysu.edu.cn
材料 Material	材料科学与工程学院 School of Materials Science and Engineering	mse.sysu.edu.cn
地理科学 Geographical Science		
资源工程 Resource Engineering and Water Resources Engineering	地理科学与规划学院 School of Geography and Planning	gp.sysu.edu.cn
城乡规划 Urban and Rural Planning		
地质学 Geology	地理科学与地质工程学院 School of Earth Science and Geological Engineering	gs.sysu.edu.cn
大气科学 Atmospheric Science	大气科学学院 School of Atmospheric Sciences	atmos.sysu.edu.cn
海洋科学 Marine Science	海洋科学学院 School of Marine Sciences	marine.sysu.edu.cn
环境科学与工程 Environmental Science and Engineering	环境科学与工程学院 School of Environmental Science and Engineering	sese.sysu.edu.cn
生命科学 Life Science	生命科学学院 School of Life Sciences	lifescience.sysu.edu.cn

45	电子信息 Electronic Information		
46	光电信息科学与工程 Photoelectron Information and Science	电子与信息工程学院 School of Electronics and Information Technology	seit.sysu.edu.cn
47	微电子科学与工程 Microelectronic Science and Engineering		
48	计算机 Computer Science		
49	信息与计算科学 Information and Computing Science	数据科学与计算机学院 School of Data and Computer Science	sdcs.sysu.edu.cn
50	软件工程 Software Engineering		
51	临床医学 Clinical Medicine	中山医学院 Zhongshan School of Medicine	zssom.sysu.edu.cn
52	临床医学 (英文授课) MBBS (English-medium)		
53	口腔医学 Stomatology	光华口腔医学院 (附属口腔医院) Guanghua School of Stomatology	zdkqyy.sysu.edu.cn
54	预防医学 Prophylactic Medicine	公共卫生学院 School of Public Health	gwxy.sysu.edu.cn
55	卫生检验与检疫 Health Inspection and Quarantine		
56	药学 Pharmaceutical Science	药学院 School of Pharmaceutical Sciences	sps.sysu.edu.cn
57	护理学 Nursing	护理学院 School of Nursing	nursing.sysu.edu.cn



## 经济环境 a Dynamic Economic Environment

点 (203 B.C. - 1368)  
时火车车程)和澳门(约1小时轻轨车程)  
名第三,仅次于北京和上海  
易会(广交会)举办地  
运会举办地

- Located in the Greater Pearl River Delta
- Starting-point of the Maritime Silk Route (203 B.C. - 1368)
- Close to Hong Kong (around 2 hours by train) and Macau (around 1 hours by light rail)
- 3rd largest GDP among all cities in China, after Beijing and Shanghai
- Host of the China Import and Export Fair
- Host of the 16th Asian Games in 2010



## 感受舒适的生活体验 Live in Comfort



## 文化 Culture

留学生将有机会沉浸于美妙多元的广东文化中,从绘画、音乐、戏剧和传统舞蹈。

- 广州象牙、玉石、木材和橄榄核雕刻
- 拥有超过300年历史的广彩
- 中国四大刺绣之一的粤绣

International students have the opportunity to immerse in the beauty and diversity of Cantonese culture, from painting, embroidery, architecture, and bonsai to music, dance.

- Ivory, jade, wood, and olive-core carvings of Guangzhou
- Colored Glazed Pottery of Guangzhou, a tradition of over 300 years of history
- Guangdong embroidery, one of the famous four embroidery styles.

## 气候 Climate

亚热带季风性湿润气候,阳光、雨水充足,春天潮湿,夏天凉爽,年平均气温 20°C - 22°C (68°F-72°F)。

Guangzhou has a subtropical monsoon climate with abundant sunshine and rainfall, characterized by rainy and hot summers, sunny autumns, and cool winters with average temperatures of 20°C - 22°C (68°F-72°F).



## 关于广州 About Guangzhou



### 旅游 Tourism

广州是一个美丽的城市，植物常青，四季花开。城市里遍布众多旅游景点，有广州的新地标广州塔、白云山风景区、越秀公园、六菩提寺和孙中山纪念堂。

- 长隆主题公园

Guangzhou is a beautiful city with ever-green scenery and flowers blooming all year round. The city boasts many tourist attractions, including the newly built Canton Tower, Baiyun Mountain, Yuexiu Park, the Six Banyan Temple, and the Sun Yat-sen Memorial Hall.

- Changlong Theme Park



### 美食 Food

广州是广东菜之乡，是中国八大传统菜系之一。广东菜以味道鲜美，菜式繁多和口感适中而闻名，因此也引发了这样说法：“食在广州。”

- 珠江啤酒
- 点心
- 家常炖汤

Guangzhou is home to Cantonese cuisine, one of the eight famed culinary traditions of China. Cantonese cooking is known for its freshness, variety, and balanced flavours and has inspired the saying, "East or west, Cantonese food is best."

- Zhujiang (Pearl River) Beer
- Dim sum
- Home-style stewed soup



中山大學  
SUN YAT-SEN UNIVERSITY

中山大学主页

Sun Yat-sen University: <http://www.sysu.edu.cn>

外国留学生办公室主页

Office for International Students' Affairs: <http://iso.sysu.edu.cn/>

招生通道

Online Application System: <http://application.sysu.edu.cn/>

地址: 中国广州市新港西路135号中山大学招生办 (外国留学生办公室)

邮编: 510275

电话: +86 (20) 84110819, +86 (20) 84112480

传真: +86 (20) 84115621

电子邮箱: [admissions@mail.sysu.edu.cn](mailto:admissions@mail.sysu.edu.cn)

Address: Admission Office (Office for International Students/Affairs),

Sun Yat-sen University, No.135 Xingang Road West, Guangzhou, P.R. China

Zip: 510275

Tel: +86(20) 84110819, +86(20) 84112480

Fax: +86(20) 84005621

E-mail: [admissions@mail.sysu.edu.cn](mailto:admissions@mail.sysu.edu.cn)

### SYSU Scholarship Recommending Units

as of 15 Feb 2017

No	Countries	Recommendation Units	Contact
1	Brunei	The Embassy of China in Brunei	Mr. Wu Zhonghao wu_zhonghao@mfa.gov.cn
2	Cambodia	Ministry of Foreign Affairs of Cambodia	Mr. Lin Sopheamfaic@gmail.com
		The Embassy of China in Cambodia	Ms. Han Jing phnompenh@culturalink.gov.cn
3	Indonesia	The Embassy of China in Indonesia	Ms. Deng 1501376357@qq.com
4	Laos	Consulate General of Lao PDR in Guangzhou	<a href="mailto:cglagz@yahoo.com">cglagz@yahoo.com</a>
		The Embassy of China in Lao PDR	Mr. Hong mountainism@hotmail.com
5	Malaysia	The Embassy of China in Malaysia	Ms. Bai chinaemb_my@mfa.gov.cn
6	Myanmar	The Embassy of China in Myanmar	<a href="mailto:cultureoffice@qq.com">cultureoffice@qq.com</a>
7	Singapore	The Embassy of China in Singapore	Mr. Zhang zhangxr2013@163.com
8	Thailand	The Embassy of China in Thailand	<a href="mailto:jiaoyuzuth@163.com">jiaoyuzuth@163.com</a>
9	Vietnam	The Embassy of China in Vietnam	Mr. Guan 1776983081@qq.com



Sun Yat-Sen University "Undergraduate Scholarship Programme for International Students from Southeast Asian Countries" 2017

**RESPONSE FORM**

Name of the Ministry/Centre.....

Country.....

- declines the invitation to be the recommending institution of the Sun Yat-Sen University "Undergraduate Scholarship Programme for International Students from Southeast Asian Countries" 2017.
- agrees to be the recommending institution\* with selection criteria and appointed focal person as follows.

**Selection Criteria:**

- 1.....
- 2.....
- 3.....
- 4.....
- 5.....

**Focal person:**

Name.....

Position.....

Email.....

**Authorised by**

Name and Signature:.....

Position:.....

Country:.....

Date:.....

**Note\*:**

The recommendation unit will be responsible for

- 1. screening the qualified applicants
- 2. issuance of recommendation letters.
- 3. submission of the recommended applicants' name list to [wuhao36@mail.sysu.edu.cn](mailto:wuhao36@mail.sysu.edu.cn) and [yangwq6@mail.sysu.edu.cn](mailto:yangwq6@mail.sysu.edu.cn) **before 30 April 2017.**